

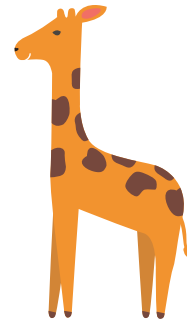
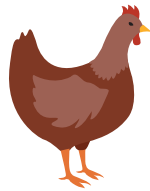
MOTHER AND BABY PAIRS

ORIGINAL SOLITUDE (PART 1)

NAME: _____

MATCH MOTHER TO BABY

Draw a line to connect the mother to her baby.



ORIGINAL
SOLITUDE
(PART 1)



THEOLOGY OF THE BODY TIDBITS...

God made the human person to be set apart from the rest of visible creation. Created in God's image, we are capable of communicating with him through prayer. And we are able to make and carry out plans — like following a recipe, or planning a party. Talk with your child about how we are different from animals in many special ways. And say a prayer with your child tonight.

MOTHER AND BABY PAIRS

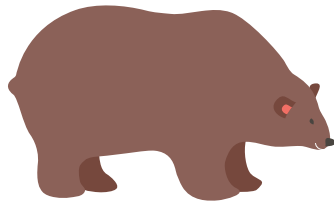
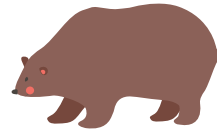
ORIGINAL SOLITUDE (PART 1)

NAME: _____

MATCH MOTHER TO BABY

Draw a line to connect the mother to her baby.

ORIGINAL
SOLITUDE
(PART 1)



THEOLOGY OF THE BODY TIDBITS...

God made the human person to be set apart from the rest of visible creation. Created in God's image, we are capable of communicating with him through prayer. And we are able to make and carry out plans — like following a recipe, or planning a party. Talk with your child about how we are different from animals in many special ways. And say a prayer with your child tonight.